

SUSTAINABLE LANDSCAPE DESIGN

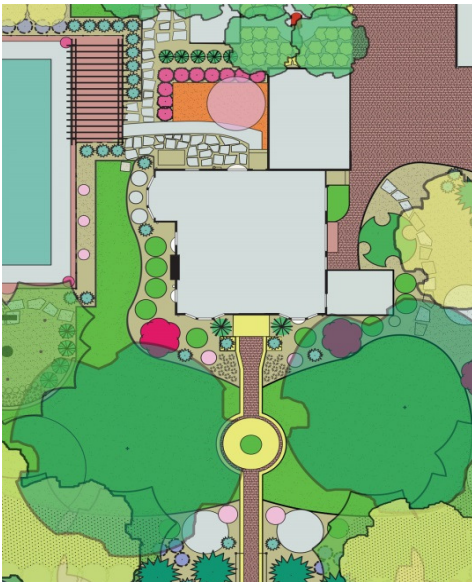
Carsten Residence Landscape Design

Minneapolis, Minnesota

For Private Client



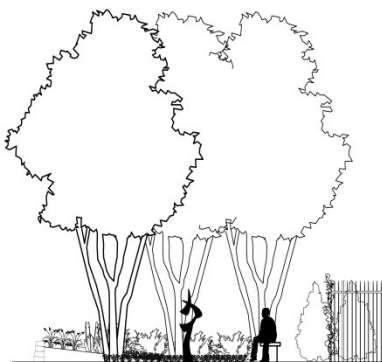
The Carsten landscape plan was developed in response to the devastation caused by a tornado that extensively damaged the client's home and reduced the landscape that had been a tree filled shady retreat to a barren hot wasteland.



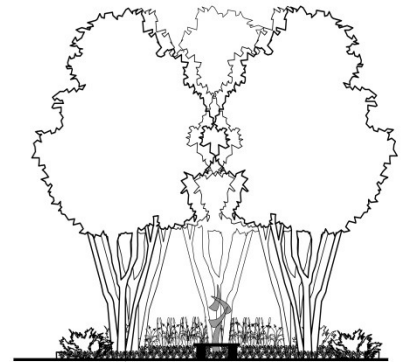
- The landscape design incorporates landscape elements that better reflect the architectural vocabulary of the dwelling, provides intimate and functional spaces within the larger landscape, and uses a textural and varied plant palette that incorporates the few remaining ornamental plants into a landscape that is supported by indigenous species.

- Restoring privacy was an important goal for the homeowner and this was accomplished by placing a successional habitat privacy border along the north and south perimeter of the .65 acre property. Species of trees and shrubs were chosen based on soils, existing conditions, and historic vegetation. Trees are planted in a manner that mimics natural succession with late successional species such as pin oak and bur oak planted amid a grove of paper birch, an early successional species. To add to seasonal interest and privacy during the winter months, conifers were added in key locations. Indigenous fruit and nut bearing shrubs provide habitat to birds and other wildlife.

- Given the size of the property, ease of maintenance was important for the homeowner and it is delivered by organizing the space according to function and using large continuous beds filled with trees and shrubs rather than higher maintenance herbaceous species. The use of tough, indigenous plants will require less watering, pruning, and staking.



Sculpture Garden Section B



Sculpture Garden Section C